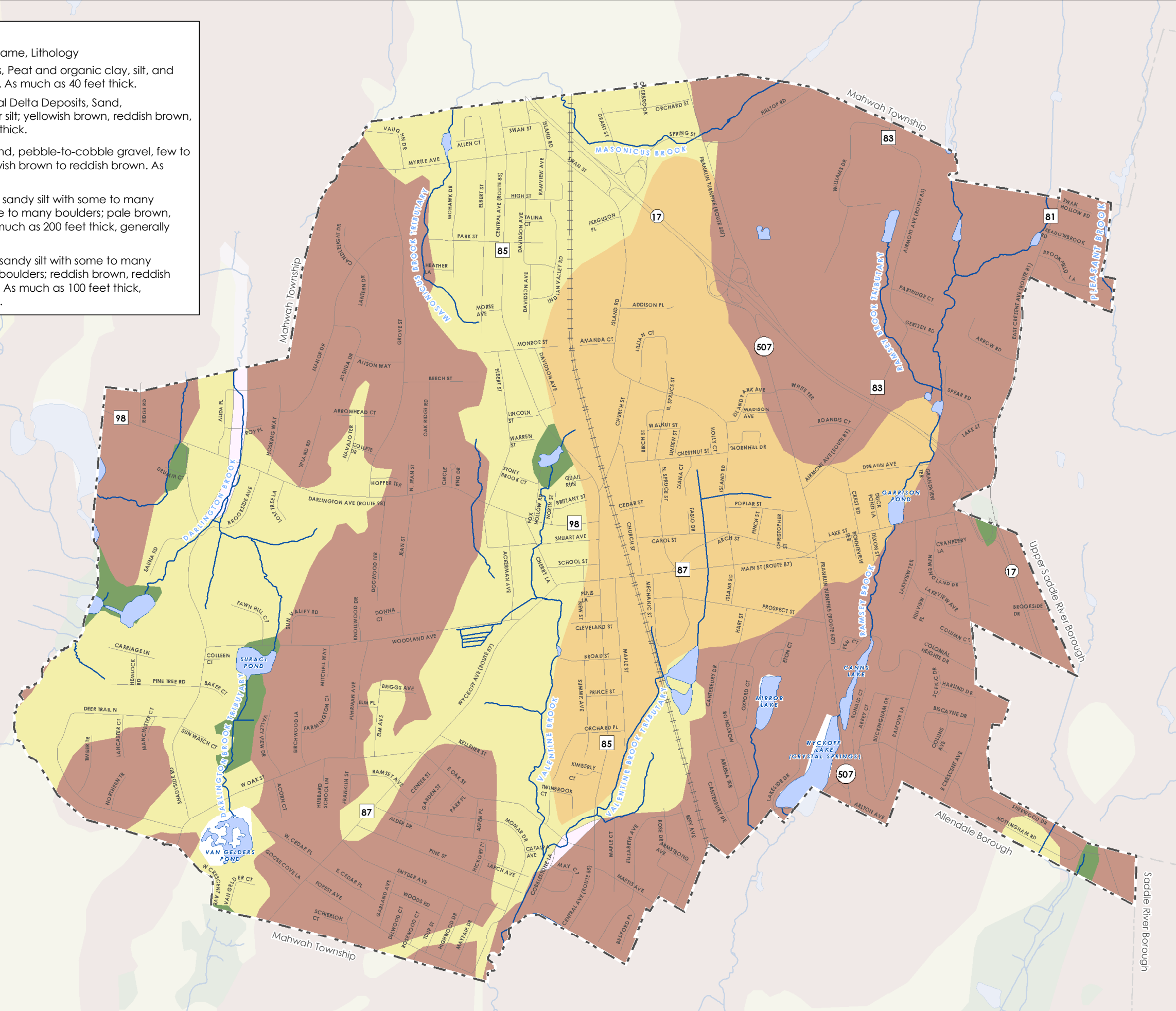
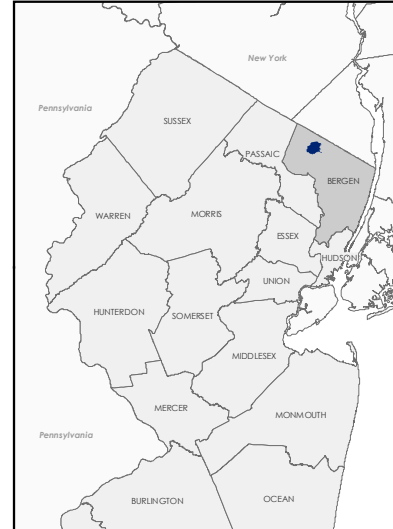


Surficial Geology
 Geologic Abbreviation, Geologic Name, Lithology

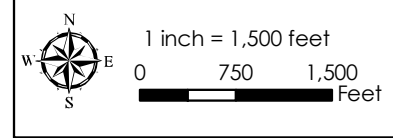
- Qs, Swamp And Marsh Deposits, Peat and organic clay, silt, and minor sand; gray, brown, black. As much as 40 feet thick.
- Qwde, Late Wisconsinan Glacial Delta Deposits, Sand, pebble-to-cobble gravel, minor silt; yellowish brown, reddish brown, light gray. As much as 150 feet thick.
- Qwic, Ice-contact Deposits, Sand, pebble-to-cobble gravel, few to some boulders, minor silt; yellowish brown to reddish brown. As much as 150 feet thick.
- Qwn, Netcong Till, Silty sand to sandy silt with some to many pebbles and cobbles and some to many boulders; pale brown, yellowish brown, light gray. As much as 200 feet thick, generally less than 30 feet thick.
- Qwtr, Rahway Till, Clayey silt to sandy silt with some to many pebbles and cobbles and few boulders; reddish brown, reddish yellow, yellowish brown, brown. As much as 100 feet thick, generally less than 40 feet thick.



NEW JERSEY COUNTY MAP



PH PRINCETON HYDRO, LLC.
 1108 OLD YORK ROAD
 P.O. BOX 720
 RINGOES, NJ 08551



- NOTES:**
1. Municipal boundaries obtained from New Jersey Geographic Information Network website.
 2. Streams and lakes obtained from NJDEP GIS website.
 3. Roads obtained from Borough of Ramsey.
 4. Surficial geology obtained from NJDEP Geological Survey GIS website.
- Map Projection: State Plane New Jersey (feet) NAD83

**MAP 10
 SURFICIAL GEOLOGY**



- Legend**
- Borough of Ramsey
 - Road
 - Commuter Rail
 - Stream
 - Lake
 - Municipal Boundary