

Threatened & Endangered Species Habitat

Vernal Habitat Area

Water Cover

State Threatened Species Observed (R3)

Forest Land Cover

State Threatened Species Observed (R3)

State Endangered Species Observed (R4)

Urban Land Cover

State Threatened Species Observed (R3)

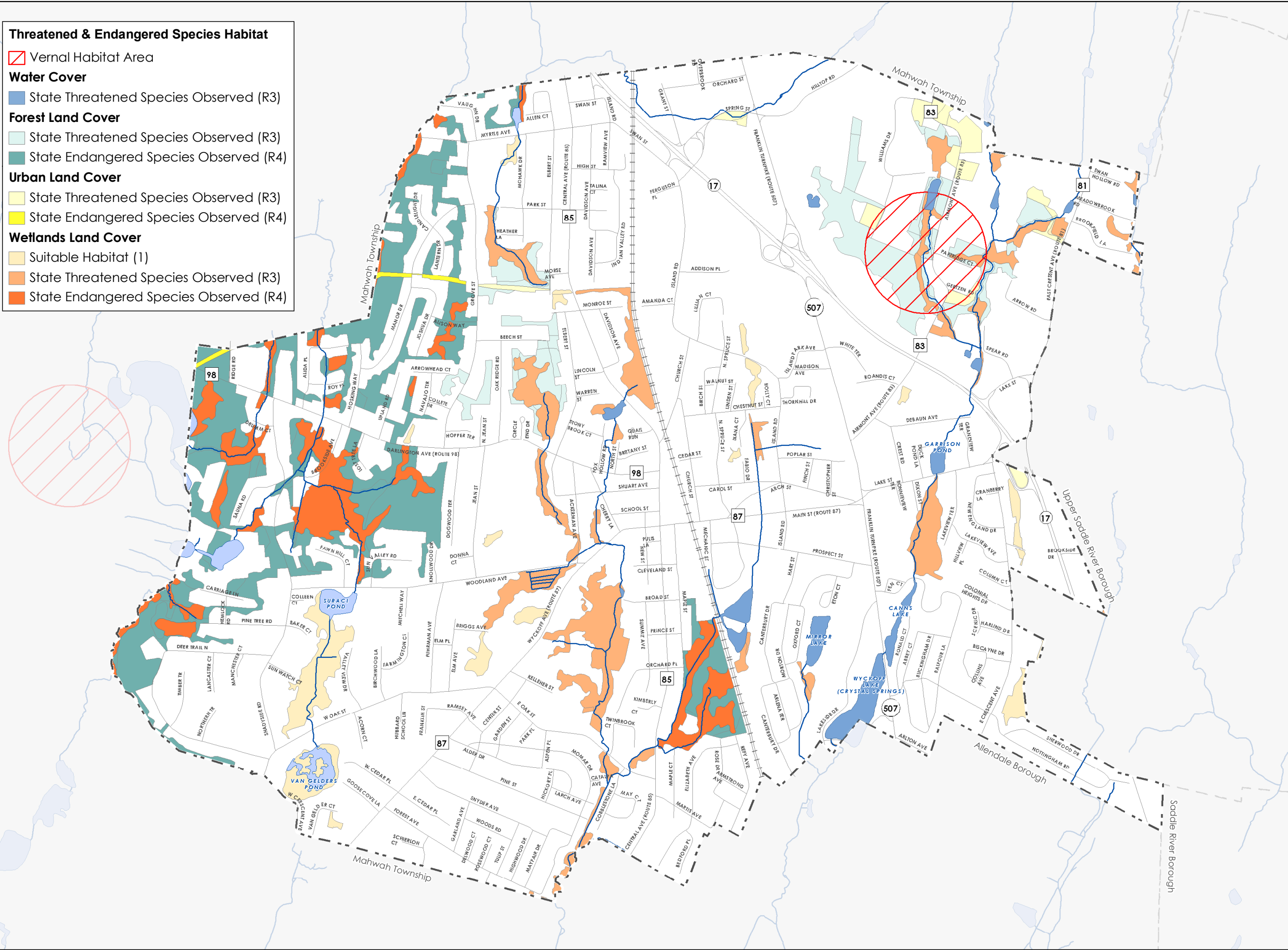
State Endangered Species Observed (R4)

Wetlands Land Cover

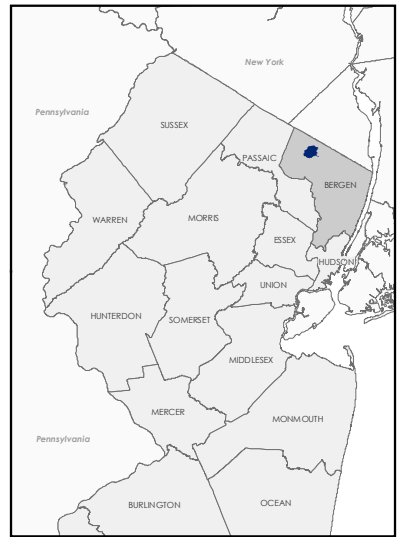
Suitable Habitat (1)

State Threatened Species Observed (R3)

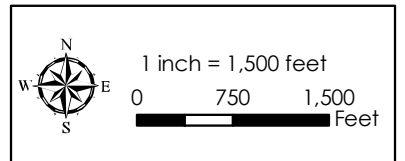
State Endangered Species Observed (R4)



NEW JERSEY COUNTY MAP



PH PRINCETON HYDRO, LLC.
1108 OLD YORK ROAD
P.O. BOX 720
RINGOES, NJ 08551



NOTES:

1. Municipal boundaries obtained from New Jersey Geographic Information Network website.
2. Streams and lakes obtained from NJDEP GIS website.
3. Roads obtained from Borough of Ramsey.
4. Threatened and endangered species habitat (Landscape Project 3.0) obtained from NJDEP GIS website.

Map Projection: State Plane New Jersey (feet) NAD83

MAP 20 THREATENED & ENDANGERED SPECIES HABITAT



Legend

- Borough of Ramsey
- Road
- Commuter Rail
- Stream
- Lake
- Municipal Boundary